



Océ
VarioLink 9522

Unleash your
business power



Your powerful
document handling
solution

- Impressive productivity
- Highly versatile
- Security
- Ease of use
- Sustainable features
- Device management software

Unleash your business power



Océ VarioLink 9522

Your powerful document handling solution



The Océ VarioLink® 9522 system has the power, reliability, speed and performance to support your business document needs. Unleash the power of this 95 ppm multifunctional machine to get document printing, copying and scanning that is high quality, fast and effective. Be more productive and let the Océ VarioLink 9522 MFP give you the professional results your business relies on.

Impressive productivity

The Océ VarioLink 9522 device accelerates office tasks by printing, copying and scanning at 95 ppm with duplex at full engine speed. A fast Ethernet, PCL® 6 printer driver and optional PostScript® 3 provide seamless document integration into virtually any network. This device will confidently handle media weights from 11 lb bond to 110 lb cover from the optional LCTs and up to 110 lb index from the standard, universal paper trays. The standard 2 GHz print/scan controller and 2 GB RAM memory ensure that document printing, copying and scanning are high quality, fast and effective.

Highly versatile

With the Océ VarioLink 9522 MFP, you can scan at 95 opm or send documents directly to email, FTP, SMB or the device's HDD. High quality output and flexible finishing options enable you to keep important print projects in-house, saving your business time and money. In addition, two powerful finishers – a 100-sheet multi-position stapler or an 80 page booklet maker with tri-letter fold capabilities – and other options such as Z-fold, two and three-hole punch, a post-sheet inserter and even a booklet trimmer help get the job done.

Security

The Océ VarioLink 9522 MFP has many standard security features in place to protect your valuable data, such as IPv6 supported network connectivity, LDAP authentication, IP address filtering, SSL encryption, HDD password lock and HDD data erase. An activity log tracks functions performed by users and helps administrators monitor security protocols. To further protect documents, scan files as encrypted PDF files or to secure mailboxes on the hard drive and use confidential printing so your data prints only when you are there to collect it.

Automatic document feeder
A 100 sheet capacity feeder supports scanning at up to 95 originals per minute.

Optional post-sheet inserter
The post-sheet inserter has two trays, each able to support 200 inserts. Add color covers and insert preprinted pages anywhere within the document post-process, eliminating manual and time-consuming collation.

Standard print/scan controller
Print, copy and scan at 95 ppm. 2 GB of RAM, a 2 GHz processor, a 160 GB HDD and 10/100/1000 BaseTX Ethernet process your information quickly.

Full-color LCD operation panel
A 12.1" vertical full-color LCD touchscreen operator panel provides easy access to job and file management, job store and recall, scan and copy functionality, as well as document thumbnail previews and a machine status screen.

Optional 100 sheet stapling finisher
A 3,200 sheet capacity stapling finisher professionally staples 100 sheet sets and uses the auto staple cut feature for high quality finishing with no staple overlap.

Standard three paper trays and bypass tray
Three universal, steel-reinforced drawers handle media from 5.5" x 8.5" to 11" x 17" and up to 110 lb index. The 150 sheet bypass tray allows 4.75" x 5.5" to 12" x 18" sized paper and media weights up to 90 lb cover. Standard paper capacity of 2,150 sheets is upgradeable to 6,650 sheets with options.

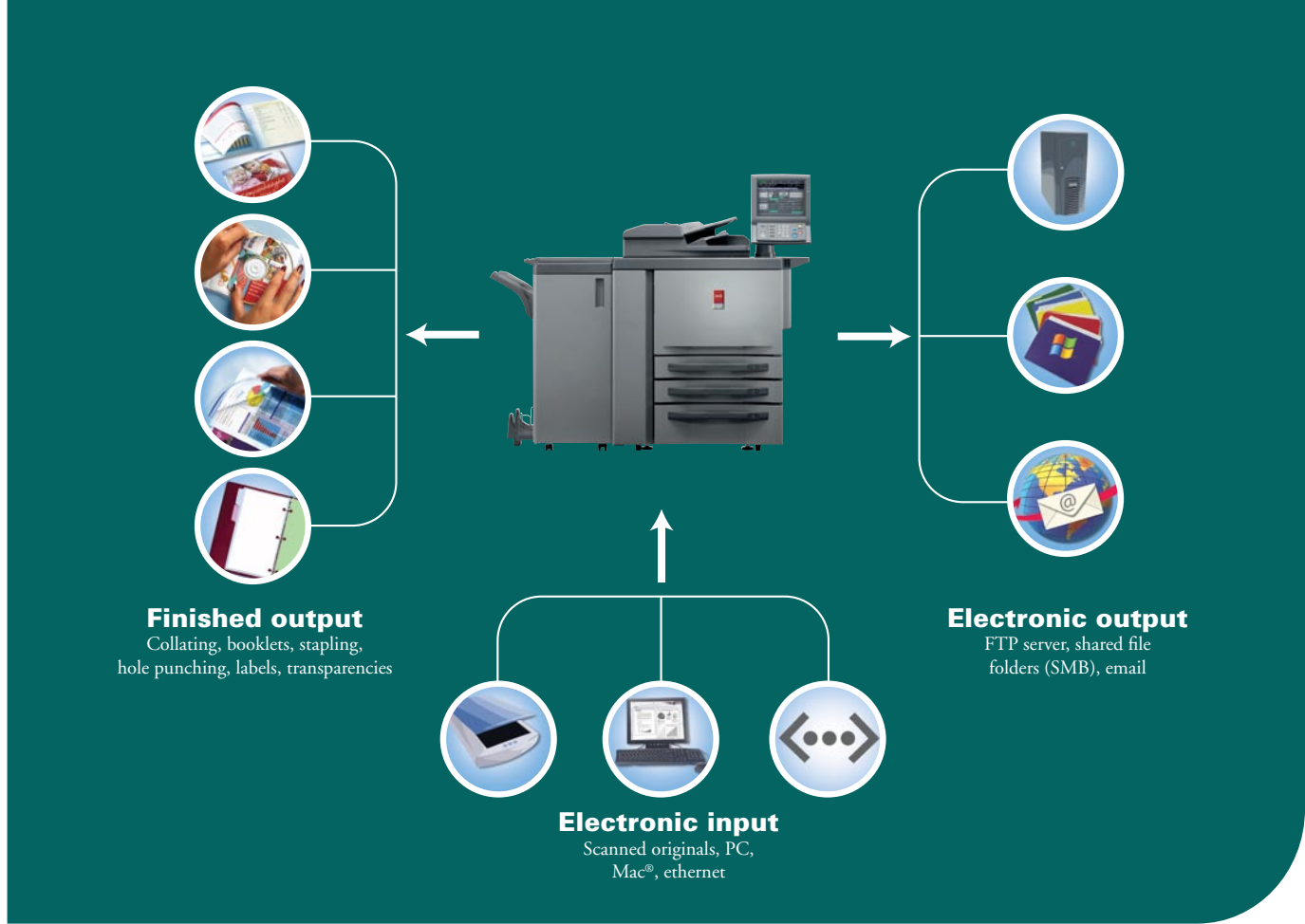
Optional large capacity tray
A large capacity cassette holds 4,500 sheets of letter sized paper. A ledger sized version will hold up to 4,000 sheets and can be set by a technician to 12" x 18" for greater media range. These LCTs handle media weights up to 110 lb cover.

Océ VarioLink 9522

- Optional:
- 100 sheet stapling finisher
 - 80 page booklet finisher
 - Post inserter
 - Punch unit
 - Z-fold unit
 - Large capacity tray, letter sized
 - Large capacity tray, up to 12" x 18"
 - PostScript 3 driver option
 - Booklet trimmer option

The capabilities described in this brochure may require additional options. See specifications.





Ease of use

Producing professional results is simple with the Océ VarioLink 9522 system. The 12.1", full-color LCD vertical touchscreen operator panel is elevated and tilts for easy access. One-touch capability promotes quick scanning, job storage and recall while thumbnail document preview means less job errors. It is a snap to look up jobs stored on the MFP in folders and user boxes. It is just as simple to combine the stored files for fast output. The easy-to-navigate operator panel also has a dedicated job list screen where users can manage, suspend, delete and increase job priority easily.

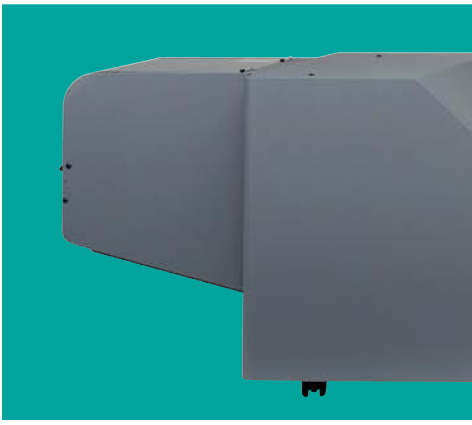
Sustainable features

The Océ VarioLink 9522 device meets Blue Angel, EPA ENERGY STAR® and RoHS standards. To reduce costs, it features a fine-grain high quality polymerized toner that requires less toner per page. It also supports a lower fusing temperature while producing crisp, clear print quality. With a system that also includes toner save and toner recycle modes, you can keep quality high while reducing your environmental impact. Furthermore, easy-to-select consumption reduction features such as confidential print, proof print, print to mailbox and duplex help you significantly reduce paper usage.

Device management software

Océ PRISMAstart™ software is a collection of utilities that help users and administrators gain control of document flow while improving productivity. Océ PRISMAenterprise™ suite software focuses on sophisticated web-based tools that make it easier for administrators to operate and manage their entire device fleet. For fleets large and small, Océ device management software solutions will help maintain standardized, central control and allow users to store, archive and share documents via their networks.





General specifications

Technology

- Imaging system: digital photographic with dual beam laser
- Toner: dry, dual component, polymerized
- Scanning resolution: 600 x 600 dpi
- Output resolution (selectable)
 - Copying: 600 x 600 dpi
 - Printing: 600 x 600 dpi (1,200 x 600 dpi with smoothing)
- Monthly average: 60,000-200,000 copies
- Monthly maximum: 750,000 copies
- System memory: 2 GB RAM (shared)/ 160 GB hard drive

Document input

- ADF speed/capacity: 95 opm (letter)/ 100 sheets, 54 opm (ledger)
- Paper weight: 13 lb to 45 lb bond and 110 lb index
- Original size: 4.75" x 5.5" to 12" x 18"
- Modes: 1-sided, 2-sided, mixed original, auto count

Document throughput

- Paper feed: front loading
- Standard: three drawers (5.5" x 8.5" to 11" x 17")
 - 1st and 2nd drawer: 500 sheets
 - Bottom drawer: 1,000 sheets
 - Bypass: 150 sheets (4.75" x 5.5" to 12" x 18")
- Standard/maximum paper capacity: 2,150/6,650 sheets
- Duplex system: standard (stackless)
- Minimum copy size: 5.5" x 8.5"
- Maximum copy size: 12" x 18"

- Paper weight
 - 11 lb to 53 lb bond and 110 lb index (main trays)
 - 11 lb to 90 lb cover (bypass)
 - 11 lb to 110 lb cover (optional LCT)

Advanced features

- Auto paper selection
- Auto paper drawer switching
- Job recovery logic
- Page insertion mode
- Frame/fold erase
- Front/back cover mode
- Auto layout
- Chapterization
- Image shift
- Combination (2 in 1, 4 in 1, 8 in 1)
- Stamp/overlay
- Booklet mode date/time
- Transparency interleaving
- Set numbering
- Page numbering
- Rotation group
- Book copy
- Watermark numbering
- Non-image area erase
- Tandem mode
- Reverse image
- RIP while printing
- Image overlay (store/delete/output/recall)
- Auto magnification selection
 - Enlargement, reduction
 - Variable magnification: 25 to 400% in 0.1% increments
 - Zoom memory
- Auto/manual exposure selection
- Job reserve

- Job store/recall
- Weekly timer
- Original size detection
- Administrator mode
- Image combine (multiple image merging)
- File combine (multiple job merging)
- Special originals
 - Normal mode
 - Mixed originals
 - Z-folded originals
 - SADP
- Text/photo enhance
 - Auto
 - Increase contrast
 - Photo
 - Text
- Full bleed copying
- Check mode
- Auto panel reset
- Interrupt mode
- Auto start
- Help mode
- Auto shut-off
- Proof copy
- Copy management (1,000 accounts)
- Manual stapling (with cover inserter only)
- Electronic/mechanical counter

Energy features

- ENERGY STAR compliant
- Energy saver (auto/manual)

Security features

- ISO 15408 compliant
- User authentication, authentication log
- Password protected user boxes
- Confidential print
- IP address filtering and port blocking
- SSL/TLS encryption
- IPv6 support
- Hard disk (all data) overwrite
- Temporary data auto-delete

Options

Saddle stitch finisher

- Top tray
 - Paper capacity: 200 sheets
- Main tray
 - Paper capacity: 500 sheets (5.5" x 8.5")
 - Non-sort, sort, group: 3,000 sheets (8.5" x 11", 8.5" x 11"R)
- Staple capacity/positions
 - 50 sheets/multiposition stapling
- Hole punch: 2 or 3 hole (optional)
- Booklet tray modes
 - Folding
 - Stapling/folding
- Tri-folding: 3 sheets maximum
- Folding/stapling
 - 20 sheets maximum (20 lb paper)
 - 19 sheets maximum (with a thick cover included)

100 sheet multiposition stapling finisher with auto staple cut

- Top tray
 - Paper capacity: 200 sheets
- Main tray
 - Modes: non-sort, sort, group, sort-staple
 - Paper capacity: non-sort, sort, group: 3,000 sheets (8.5" x 11", 8.5" x 11"R)
- Staple capacity/positions
 - 100 sheets/multiposition stapling
- Hole punch: 2 or 3 hole (optional)

Post-sheet inserter unit

- Paper size: 5.5" x 8.5" to 11" x 17"
- Paper weight: 13 lb to 53 lb bond and 110 lb index
- Capacity: top/bottom tray - 200 sheets each; bottom tray supports 11" x 17"

Trimmer unit

- Paper size: 8.5" x 11"R, 8.5" x 14", 11" x 17"
- Paper weight: 16 lb to 53 lb bond and 110 lb index
- Number of trimming sheets
 - 20 sheets maximum (20 lb paper)
 - 19 sheets maximum (with a thick cover included)



Letter size LCT

- Paper capacity: 4,500 sheets
 - Paper size: 8.5" x 11"
 - Paper weight: 11 lb bond to 110 lb cover
- ## Large size LCT
- Paper capacity: 4,000 sheets
 - Paper size: up to 12" x 18" (paper sizes other than 11" x 17" must be set by technician; not a universal tray)
 - Paper weight: 11 lb bond to 110 lb cover

Z-fold/punch unit

- Modes: z-folding and punch (2 and 3 hole)
- Paper size: 8.5" x 14", 11" x 17"

Standard printer controller specifications

Controller

- Type: embedded controller
- 2 GHz scan/print processor
- Memory: 2 GB RAM (shared)
- Hard disk: 160 GB (shared)
- Operating system: Linux®
- Controller interface: USB local PC interface, 10/100/1000 BaseTX

Standard PCL 6

- TIFF direct print
- 80 fonts
- 32 and 64 bit print drivers: Windows® 2000, Windows XP, Windows Server® 2003, Windows Vista®

Optional Adobe® PostScript 3

- PDF direct print
- 134 fonts, 2 symbol sets
- PostScript 3 driver: Mac OS® 10.3, 10.4, 10.5

Network protocol support

TCP/IP, IPX/SPX, NetBEUI, LPR/RAW Socket, NDS/Bindery, IPP, AppleTalk® (EtherTalk®), IPv6

Job interrupts

- Interrupt print to copy
- Print while copying - job remains in queue

Scan functions

- File format: TIFF, PDF, encrypted PDF, XPS
- Scan to HDD
- Scan to email
- Scan to FTP
- Scan to SMB
- Scan to group
- TWAIN driver
- LDAP
- Scan resolution: 600 dpi, 400 dpi, 300 dpi, 200 dpi
- One-touch scanning

PRISMastart utilities for users

- Box operator
- Direct print (TIFF standard/PDF optional)

- Print status notifier

- Web connection utilities

Status (via web connection)

- Print job status
- Job paused
- Cover open
- File info
- Printer error (paper jam, paper out)
- Offline
- Input trays
- Queue position
- Warming up
- Power save
- Toner level
- Processing

Beyond the Ordinary



Printing for Professionals

Océ helps the people who make our world. Companies everywhere use Océ technical documentation systems in manufacturing, architecture, engineering and construction. Each week, high-speed Océ printing systems produce millions of transaction documents such as bank statements and utility bills. And in offices around the world, people use Océ professional document systems to keep the wheels of business and government turning. Océ is also at work in publishing on demand, newspaper production and wide format color for spectacular display graphics. It all helps our professional customers go 'Beyond the Ordinary' in printing and document management.

Océ North America

Document Printing Systems

100 Oakview Drive

Trumbull, CT 06611

Telephone 1.866.462.4478

Fax 1.800.446.0760



As an ENERGY STAR partner, Océ North America Inc. has determined that this product meets the ENERGY STAR guidelines of efficiency.

Océ, Océ logo and Océ VarioLink are registered trademarks of, and Océ PRISMAstart, Océ PRISMAenterprise are trademarks of, Océ-Technologies B.V. All other terms and product names may be trademarks or registered trademarks of their respective owners and are hereby acknowledged. Specifications subject to change without notice.

Copyright 2009, Océ

All Rights Reserved

An Equal Opportunity Employer

BR50343

For information and services, visit us at:

www.oceusa.com